



Welcome to Reading Museum

This picture guide will help you find your way around Reading Museum. There is information about the facilities available, including seating areas and toilets.



Reading Museum is free to enter

You will enter the building through our main entrance with automatic sliding glass doors.



Reception Desk

Here our staff will answer any questions you may have about the museum, activities and accessibility.



Behind the Reception Desk you can find our Gift Shop

The shop has Reading themed gifts, Bayeux souvenirs and more. Reception staff will take your payment.



The toilets are behind the Reception Desk on the left

You need to enter a code at the door to enter. Ask at Reception for the code.



This is the museum entrance past the Reception Desk on your left

There is a short flight of steps or a ramp. The steps and ramp both have hand rails.



As you enter the Museum

You may be greeted by a member of staff or volunteer who will tell you what is on display.



Any questions?

If you have any questions or need assistance while in the museum, find a member of staff wearing a **lanyard with a Reading Borough Council ID.**



The Welcome Gallery starts on your left and loops around

This Gallery sometimes features videos on the wall with a sample of the Reading Museum's half-million item collection.

Foldable seating is available to take with you around the museum can be picked up in this Gallery.



You can find guides and trails behind the blue Welcome Sign



Each object in the Welcome Gallery has a number next to them

This number matches a label you can find in these binders.



When you finish with the Welcome Gallery

Look at the **'Show and Tell' community case** with changing exhibits about Reading.



This is the entrance to the Ceremony room

To the right of this doorway you will see **The Land Before the Town** case. This case shows artefacts from Reading's earliest prehistoric settlers all the way to the Anglo-Saxons. Evidence shows that Reading has been continuously occupied for at least 10,000 years.



The lift is glass, it takes you to all floors



Walk around the lift and under the Story of Reading Sign

You will see mannequins in this gallery. There is also a human arm bone on display.



As you enter you will find this capital that came from Reading Abbey

You can touch it to feel the carvings.



Enter the small gallery

Here you can find our more about Reading Abbey. You can press these buttons to listen to sounds that could have been found in the Abbey.



Exit the small gallery and continue to your left

Here you can find cases about Reading in the 1600s.

On the left you can discover a portrait of Queen Elizabeth I painted from life.



Continue around the Ground Floor

Follow the cases as they go through the history of Reading from the 1700s to the Present. There is a mannequin in this section.

Soft seating is available in this area of the gallery.

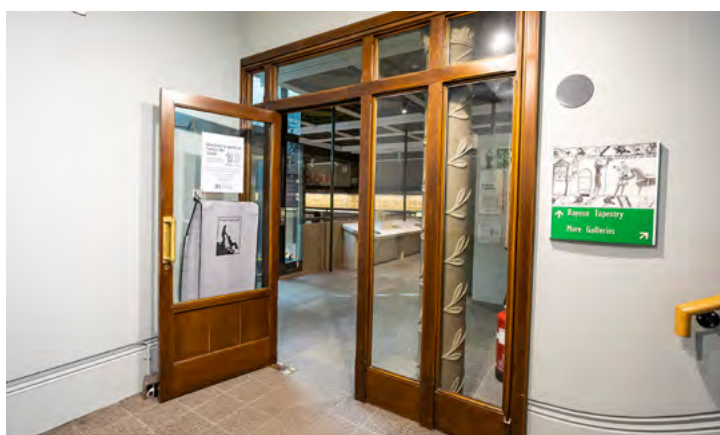


At the end turn right and go through these double doors next to the Community Case to access the stairs

Or you can take the lift on your right-hand side.

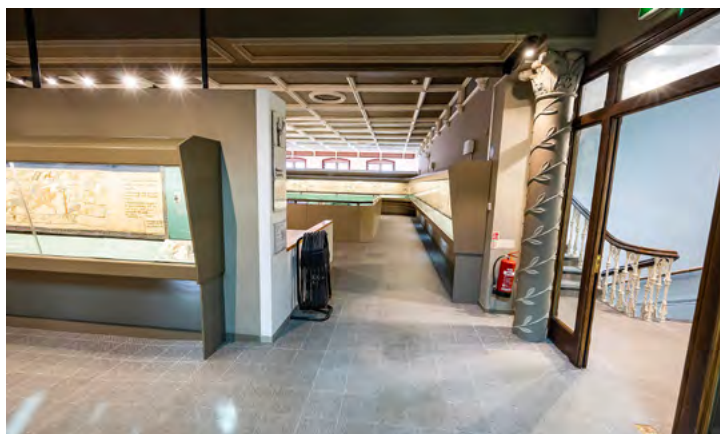


Go up the stairs to the first-floor landing



The door on the first-floor landing enters the Bayeux Tapestry Gallery

Turn right for the start of the tapestry. Our replica of the Bayeux Tapestry is 70 metres long, so it fills the entire first floor.



In this gallery you can find a replica of the Bayeux Tapestry

It was made by Victorian women embroiderers and depicts the events leading up to and including the Battle of Hastings.

If you have taken the lift:

Walk straight past the doorway on the right to find the first panel which is then to your left.



The Tapestry starts with King Edward on his Throne

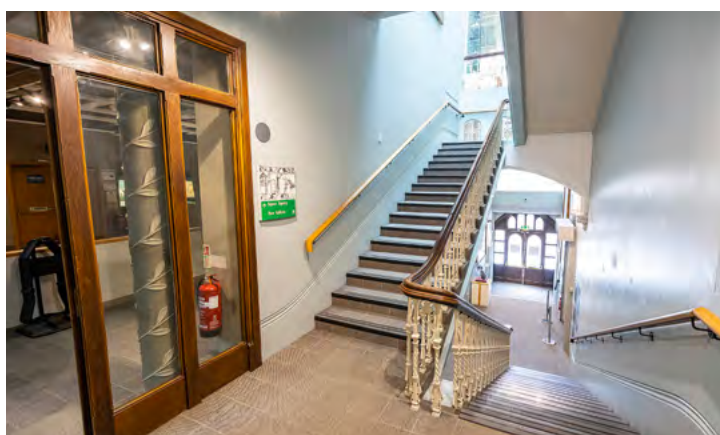
You can take a photo on the replica throne next to the fire exit doors.

There are dressing up items in this area.



Once you finish the first half of the tapestry

Walk towards the lift and turn left around the corner to continue around the tapestry.



When you complete the loop around Bayeux Gallery

Exit and continue up to the top of the stairs. Or use the lift to go to the next floor.



The Silchester Gallery is on the second floor

The entrance is on your right if you have used the stairs, and ahead of you and to the left if you have used the lift. This gallery contains Roman artefacts.



In this gallery, you can roam around the exhibits

These are from the excavations at the Roman town at Calleva Atrebatum in Silchester.



In this gallery you can find the famous Silchester Eagle

The eagle inspired a novel and a film.



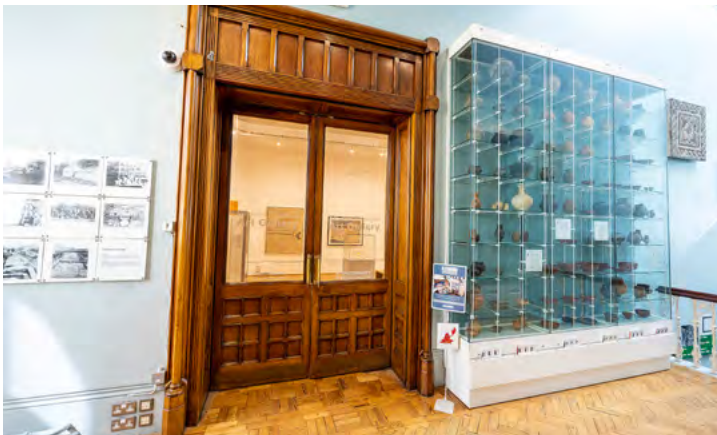
Exit the Gallery via the double doors and enter the Silchester Annexe

Or exit the way you came in.



The Silchester Annexe has soft seating

It also has books for people of all ages to sit and take a break. There are two large wall cases with examples of Roman pottery.



You can enter the Sir John Madejski Art Gallery

Through these doors in the Silchester Annexe.



The Sir John Madejski Art Gallery may look different as it is always changing!

This gallery hosts temporary exhibitions for you to enjoy.

There are 3 sets of doors in this gallery.

Exit the Gallery through the double doors at the far end to enter the **Window Gallery**.



The upstairs toilets are on the right

There is **soft seating** on the left. Continue straight to enter the **Window Gallery**.



The Window Gallery

This gallery contains a collection of sculptures and decorative art seen in natural light.

Hard benches can be found on either side of the room next to the windows.

There are also moveable wooden stools underneath the benches.



Enter the Huntley & Palmers Gallery

On your left is a **soft seating area** with a headset audio interactive.



The Huntley & Palmers Gallery starts here

On your left is one long case. It has biscuit tins and other objects from Huntley & Palmers biscuit factory.

The gallery also includes interactives, maps, posters and two desk cases on your right.



At the end of the Gallery

You will find a seating area and a video screen that automatically plays films about biscuit making.

Soft seating is available here to watch the videos.



Continue along the hallway on your right

Do not go up or down the stairs as they are fire exits only.

At the end of the hallway, you will enter the **Green Space**.

Taxidermy is displayed in this gallery.



In the Green Space gallery

You will follow the story of our local environment from 400 million years ago to the present day.



Our mascot Bertie the Badger is in this gallery

Bertie is very old and very fragile, please avoid touching her!



Once you have wandered through the Green Space exit into the Atrium

In the Atrium you can sit on **soft seating** and look at the most complete mosaics from Roman Silchester and enjoy the modern ceramics of Alan Caiger-Smith.



This now brings you back to the top of the stairs

You can exit through these doors to use the stairs back to the ground floor. Or you can use the lift in the centre of the Atrium.

Thank you for visiting
Reading Museum and we
hope to see you again soon!